



The DOHaD Mentoring Program is grounded in the principles of **Equity, Diversity, and Inclusion (EDI)**, aiming to foster equal opportunities, amplify diverse voices, and support the development of early-career researchers within an inclusive and collaborative environment.

The DOHaD Mentoring Program logo conveys a profound message aligned with the scientific and human principles of the program.

Mentorship relationship and female connection

The logo of the Latin American mentoring program features two connected women, one representing the mentor and the other the mentee. It is also possible to observe the leadership role exercised by both women, as well as the presence of mutual support. This connection symbolizes a relationship built on:

- active listening
- exchange of experiences
- co-construction of knowledge
- problem-solving strategies

Both share the same regional identity, Latin America, which reinforces a sense of belonging, shared context, and cultural connection.

Connection of ideas and knowledge

The overlapping figures, particularly in the head region, suggest a connection between minds, representing:

- intellectual interaction
- exchange of knowledge
- scientific and personal development

Individual paths and mutual support

Although connected, each woman is facing a different direction, symbolizing that:

- each trajectory is unique
- each follows her own individual path

At the same time, they remain connected, indicating that this journey is strengthened by mutual support, an essential element of mentorship.

Essence of the program

The logo elegantly synthesizes the program's purpose:

a support network grounded in listening, exchange, and knowledge-building, where different trajectories develop in an interconnected way, respecting individuality while being strengthened through connection.

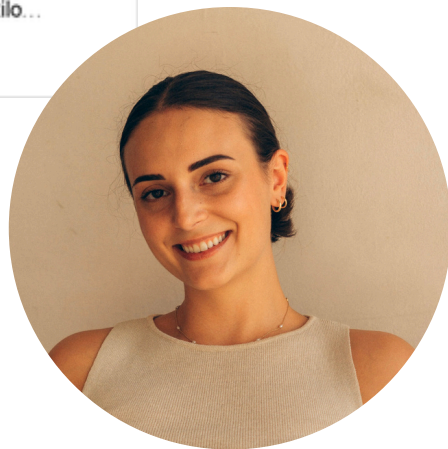


The logo was developed by Fernanda Albano Faés, a Visual Design student at the Federal University of Rio Grande do Sul, who created the complete visual identity of the DOHaD Mentoring Program.

Her intention was to delicately and organically convey the knowledge acquired by the mentee through the mentor. It also incorporates a color palette in shades of blue that evokes science and acceptance.

Follow and learn more about their work:

<https://www.behance.net/ferfaes>



Contact: fer.sfaes@gmail.com